

Information Session-The University of Tulsa



THE UNIVERSITY *of*
TULSA

THE UNIVERSITY OF TULSA

- Founded in 1894.
- Private and doctoral degree-granting coeducational institution
- 66 bachelor's, 28 master's, 15 doctoral programs available.
- **Top 75** Private University in the US! (US News Ranking)
- **Top 500** globally by the Times Higher Education World University Rankings
- **#3** Petroleum Engineering Program in the US!





QUICK FACTS

3,705

students
from

13

average
class size

43 66

states countries

student-
faculty ratio

11:1

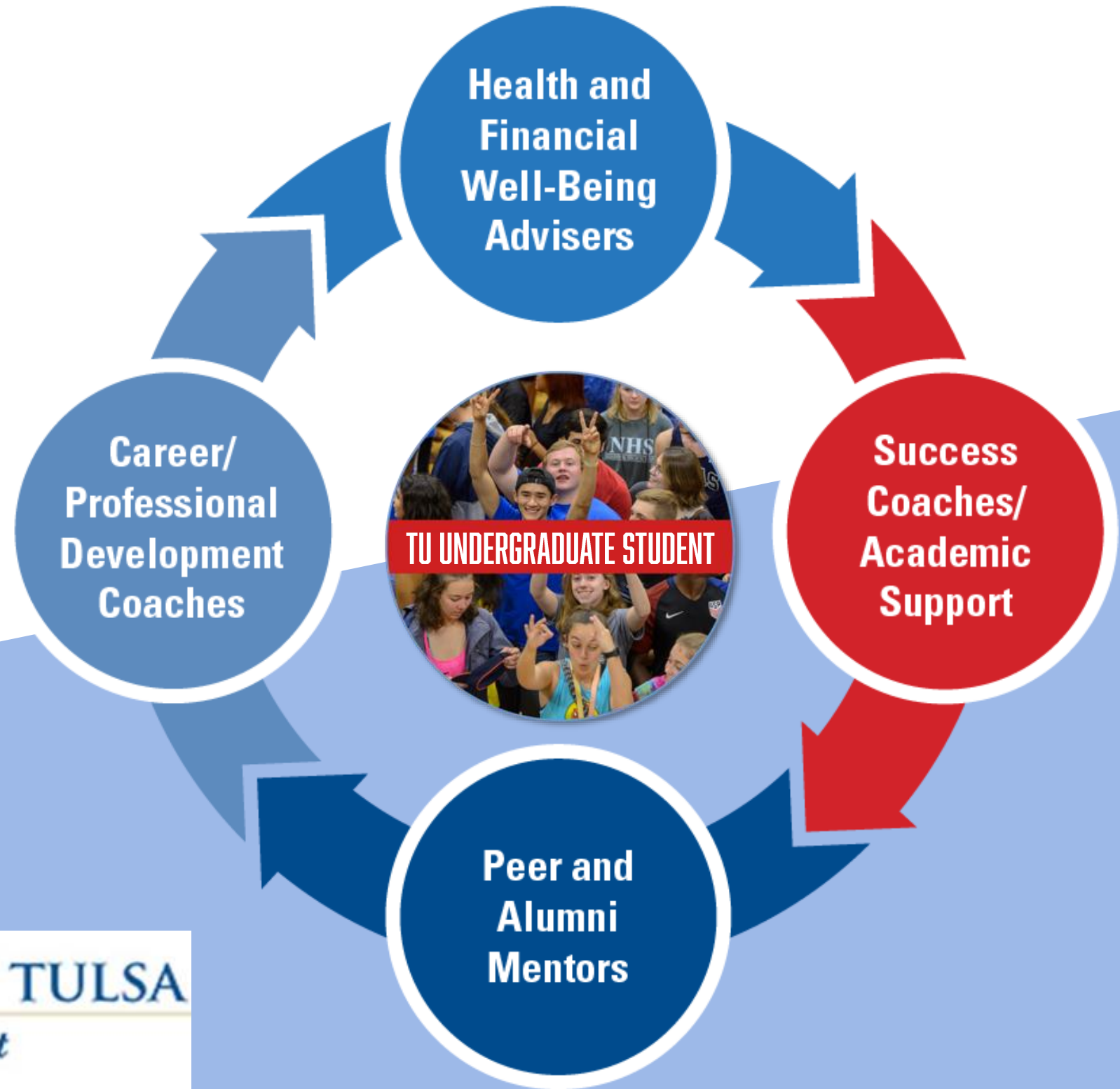
488

freshman class

placement rate

93%

STUDENT SUCCESS



THE UNIVERSITY OF TULSA
Center for Global Engagement

EXPERIENTIAL LEARNING



STUDENT GLOBALIZATION



Study Abroad



Class Trips



JumpStart TU



International Community



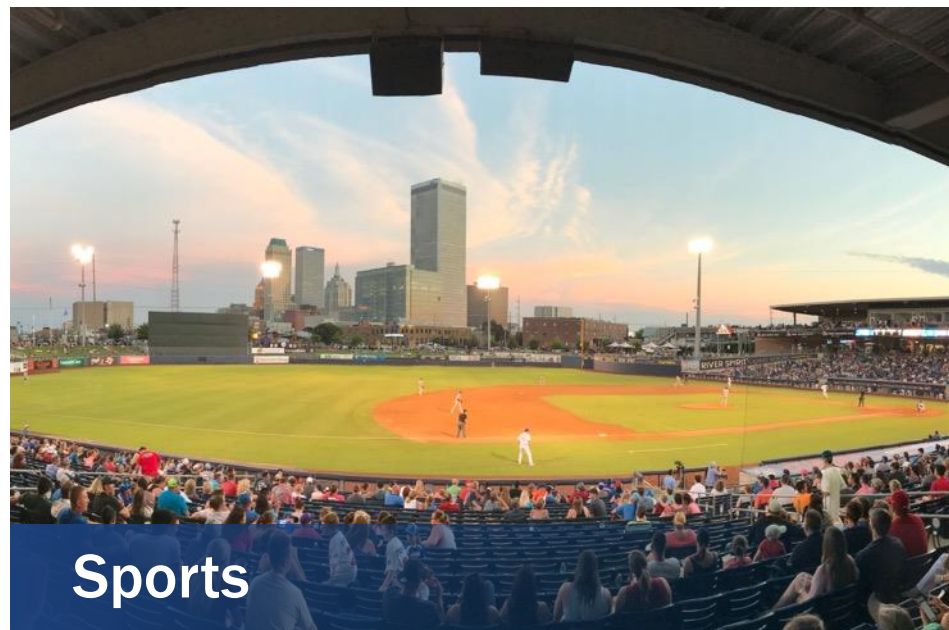
OUR CITY



Art



Music



Sports



Attractions



UNDERGRADUATE ADMISSION CRITERIA

English Proficiency

TOEFL 70
IELTS 6.0
Duolingo English Test 105

Official Transcript

GPA: 2.5 or above (TU calculation)

Highly Encouraged

Personal Statement

Recommendation



Scholarships for 2+2 students

University Partnership Scholarship: \$13,500

Tuition and Fees

- Tuition—Fall & Spring: \$45,566 (\$32,066 after the scholarship applied)
- Fees: \$1,220
- Health Insurance: \$2,223
- Other Estimated Living Expenses: \$17, 516

Total for Certificate of Financial Resources: \$66, 525 (**\$53,025** after the scholarship applied)



GRADUATE ADMISSION CRITERIA

English Proficiency

TOEFL 80/ 90
IELTS 6.0/ 6.5
Duolingo English Test 110

Official Transcript

GPA: 3.0 or above (TU calculation)

GRE/GMAT

Statement of Purpose

2-3 letters of Recommendation

Resume/CV



COST OF ATTENDANCE

Tuition and Fee	\$28,495
Personal and living Expense	\$20,366
I-20 Funding Requirement	\$48,861

SCHOLARSHIPS

- Merit-based scholarships
- Automatic evaluation after admission

Assistantships

- Tuition coverage
- Health insurance coverage
- \$1,800 monthly stipend



Timeline for program students

- Step 1: interested students should visit your International affairs office to complete all required internal documents and process.
- Step 2: complete TU online application, submit all required documents
- Step 3: receive admission letter and I-20
- Step 4: apply for visa
- Step 5: apply for on-campus housing, prepare for departure
- Step 6: arrive in Tulsa, attend orientation programs and enroll for classes

Suggested application deadlines:

- First priority deadline: **Jan 31, 2023**
- Second priority deadline: **March 31, 2023**



ON-CAMPUS HOUSING

- 44. Brown Village Apartments
- 48. Fisher Suites
- 49. Hardesty Hall
- 50. John Mabee Hall
- 56. LaFortune House
- 59. Lottie Jane Mabee Hall
- 60. Mayo Village Apartments students
- 62. Norman Village Apartments & Clubhouse

BEST FOR...
 Engineering students
 Any PG students
 Any PG students
 Low Cost (Dorm)
 Low Cost (Dorm)
 Low Cost (Dorm) Any PG
 Business students



Kiplinger



Forbes.com



THE WALL STREET JOURNAL
WSJ



THE UNIVERSITY *of*
TULSA

TULSA, OK